

## EasyWaveX Install and User Guide

### 1 Prior to Installation

#### 1.1 Hardware requirement

- 1GHz or higher processor
- 200M or more hard disk space
- 1024x768 monitor resolution or above
- 256M or more RAM
- USB interface and cable
- LAN interface and cable

#### 1.2 System Support

- Microsoft Windows 2000, XP system
- Win7 32bit and 64bit system
- Vista 32bit and 64bit system
- Windows 8 32bit and 64bit system.
- Windows10 32bit and 64bit system.

#### 1.3 Software requirement

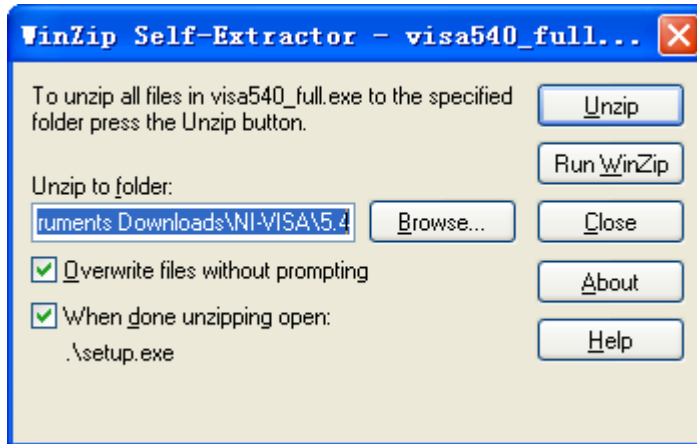
NI-VISA:

Before installing the EasyWaveX application, you have to install NI-VISA 5.4(This manual takes the NI-VISA5.4 as the example and you can install the latest version), which you can download from the [NI-VISA](https://www.ni.com/en-us/support/downloads/drivers/download.ni-visa.html#329456) website:

<https://www.ni.com/en-us/support/downloads/drivers/download.ni-visa.html#329456>

After you download the file you can follow the steps below to install it:

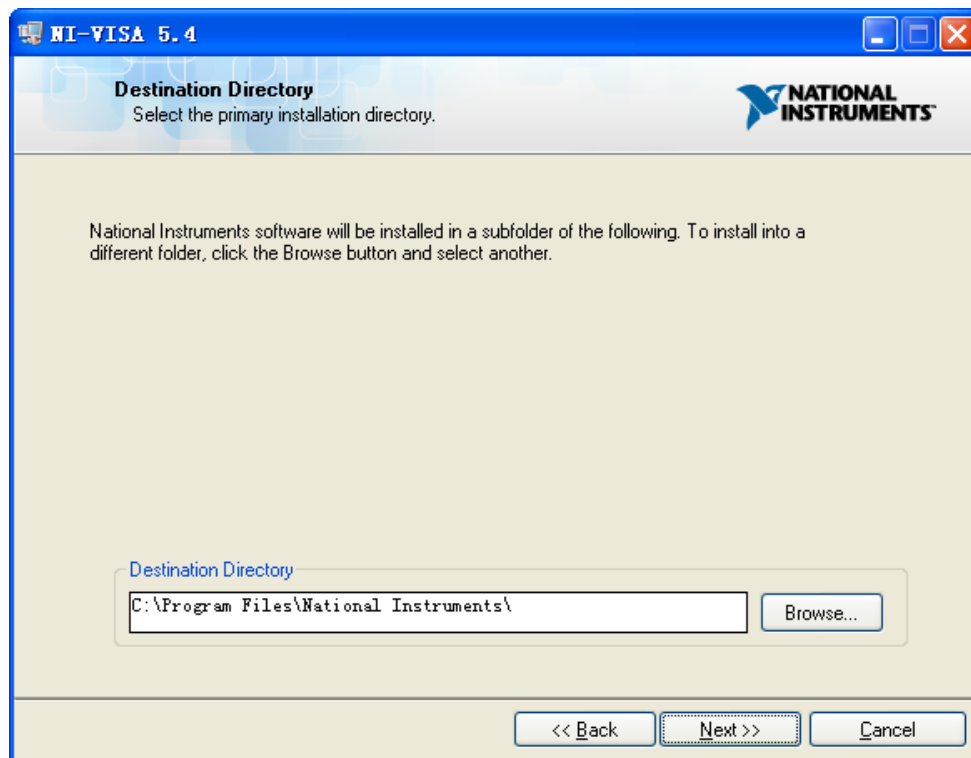
- a. Double click the visa540\_full.exe, dialog shown as below:



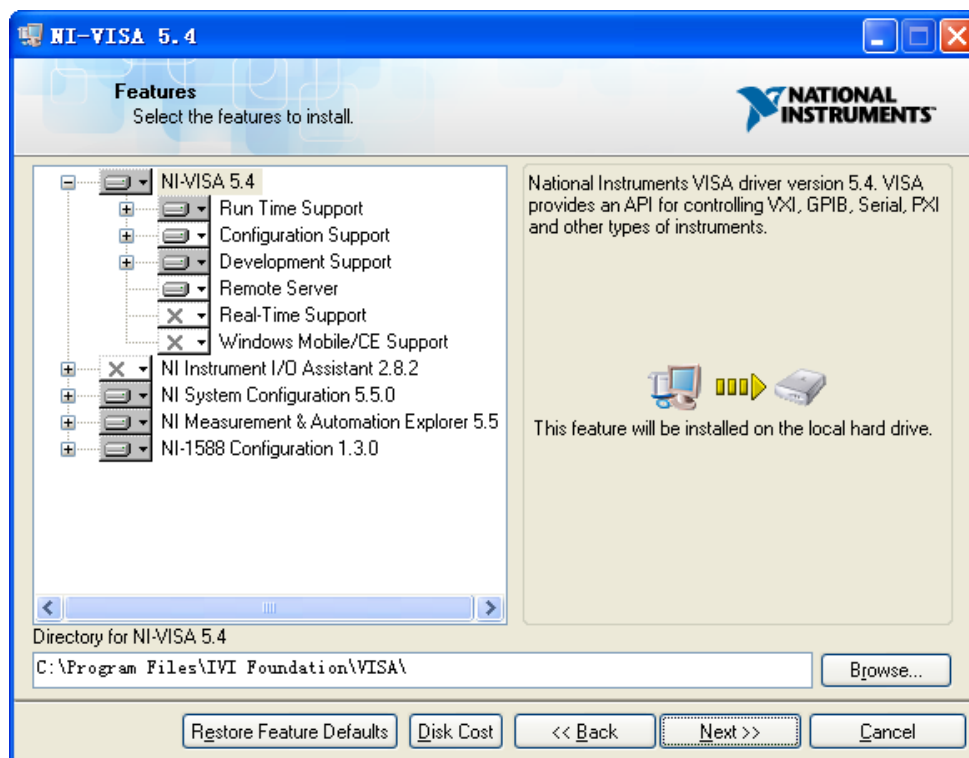
- b. Click Unzip, the install process will launch after unzipping files. If your computer needs to install .NET Framework 4, its Setup process will auto start.



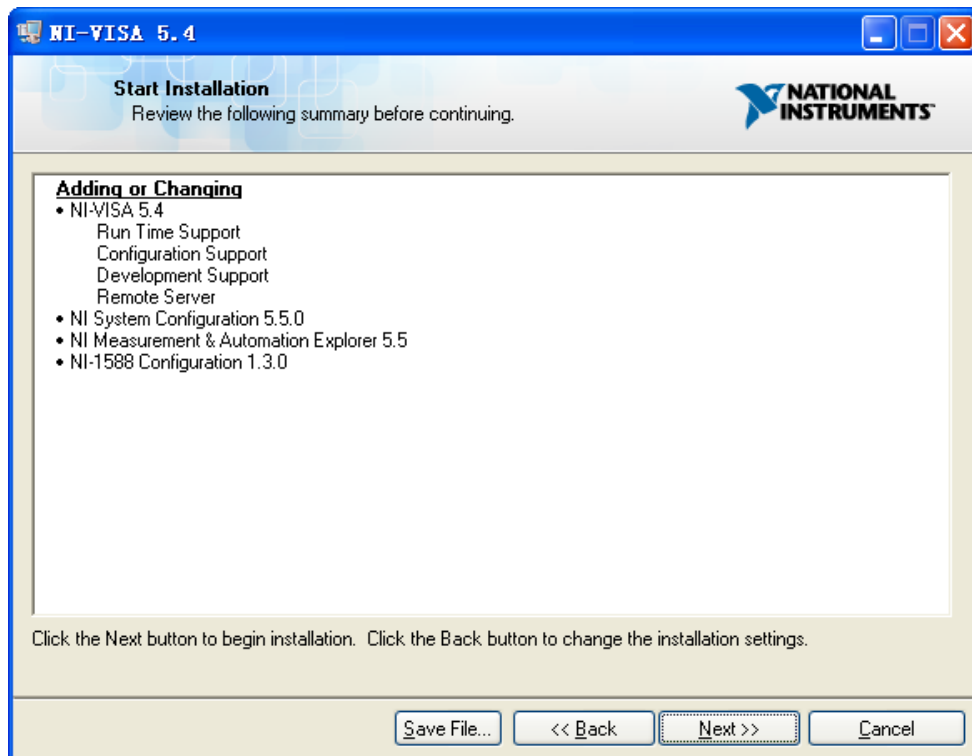
- c. The NI-VISA install dialog is shown above. Click Next to start the installation process.



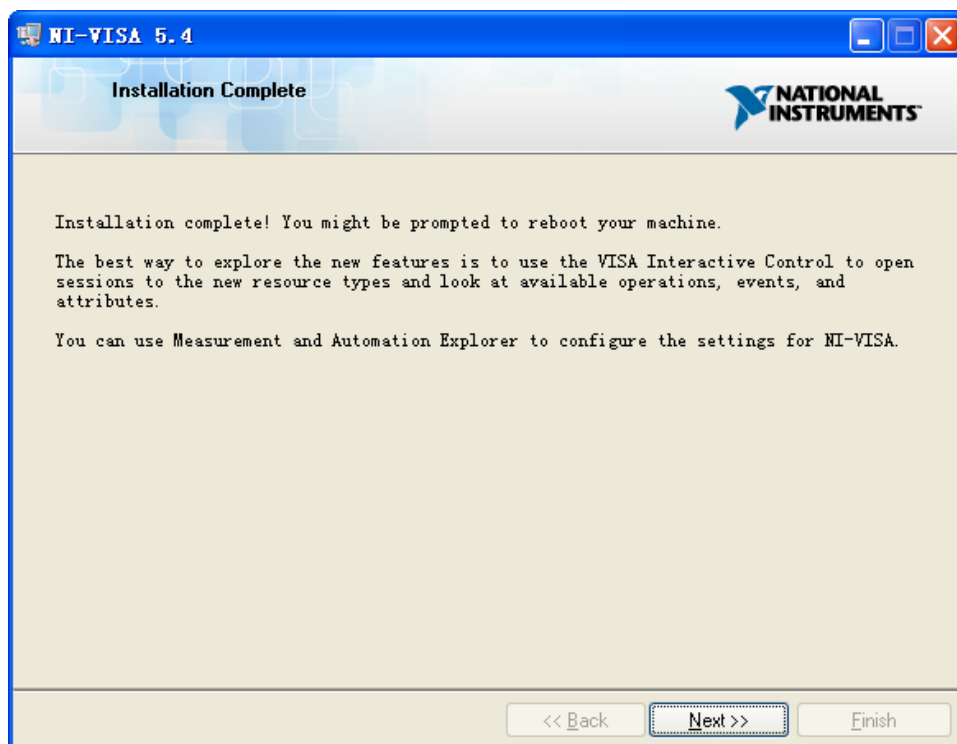
- d. Set the install path, default path is “C:\Program Files\National Instruments\”, you can change it. Click Next, dialog as shown above.



- e. Click Next twice, in the License Agreement dialog, select the “I accept the above 2 License Agreement(s).”, and click Next, dialog as shown below:



- f. Click Next to begin installation.



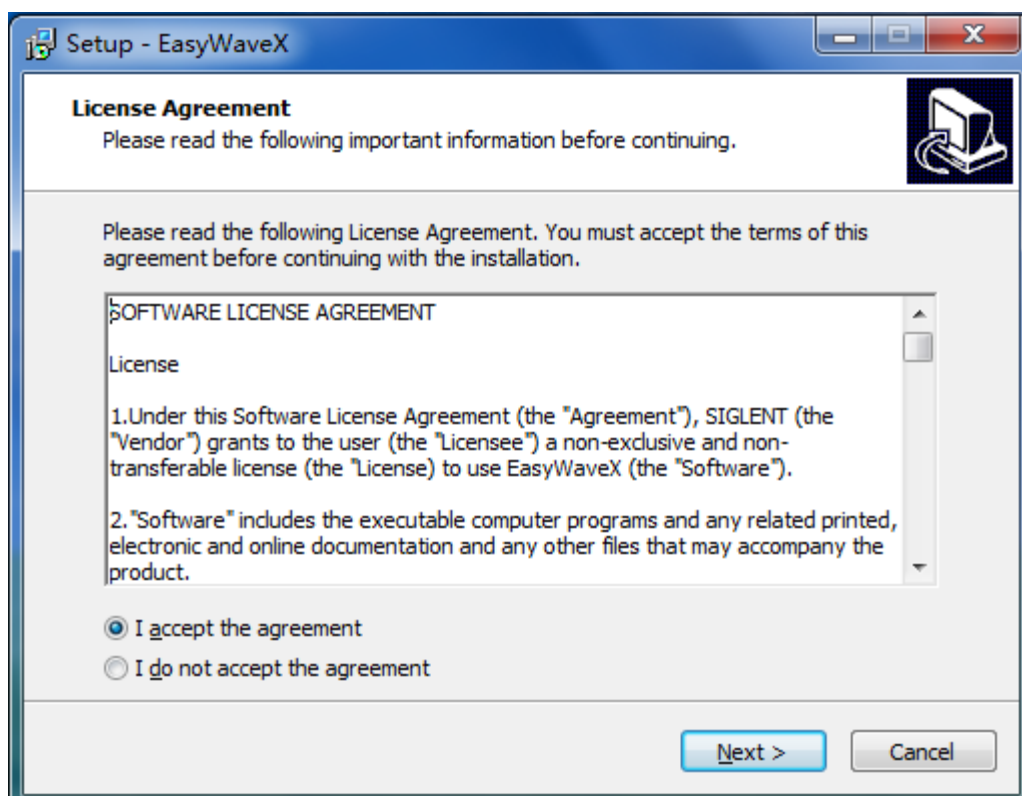
- g. Now the installation is complete, reboot your PC.

If you don't want to install the tools in NI-VISA, you can install only the NI-VISA runtime engine, which is much smaller than the full version. For example, download [NI-VISA Run-Time Engine 5.4](#) to your PC and install it as default selection. Its installation process is similar to the full version.

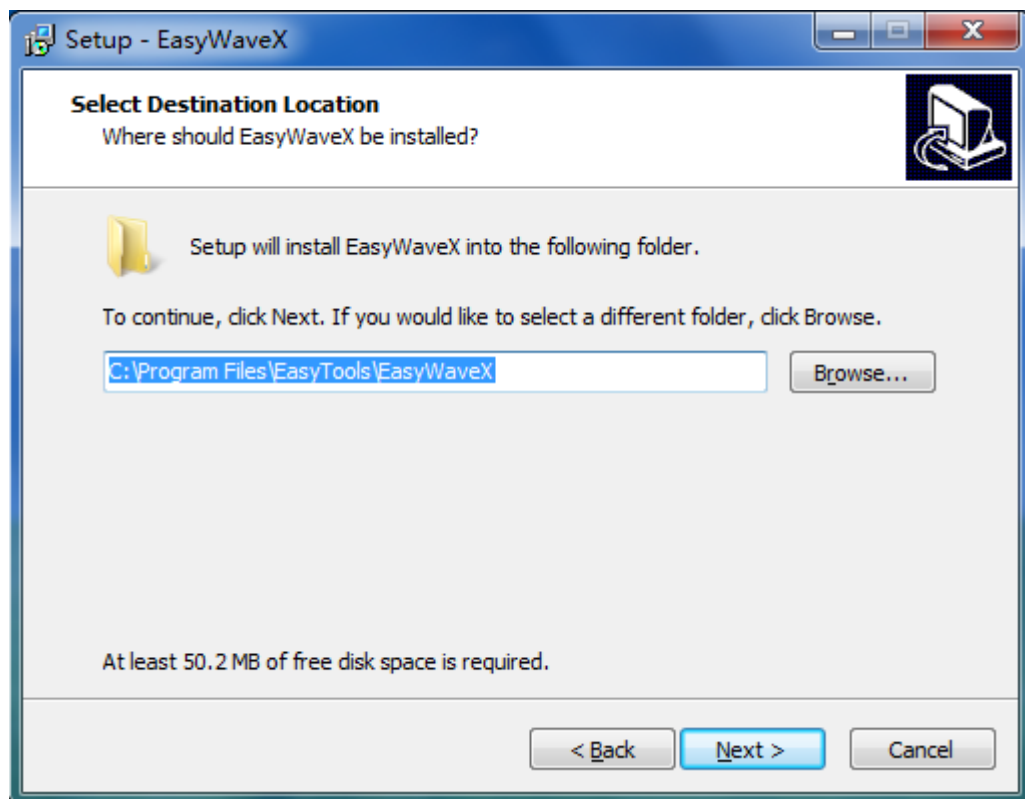
## 2 EasyWaveX Software Installation

- a. Double click on the EasyWaveX\_setup.exe file, launch the install process and select

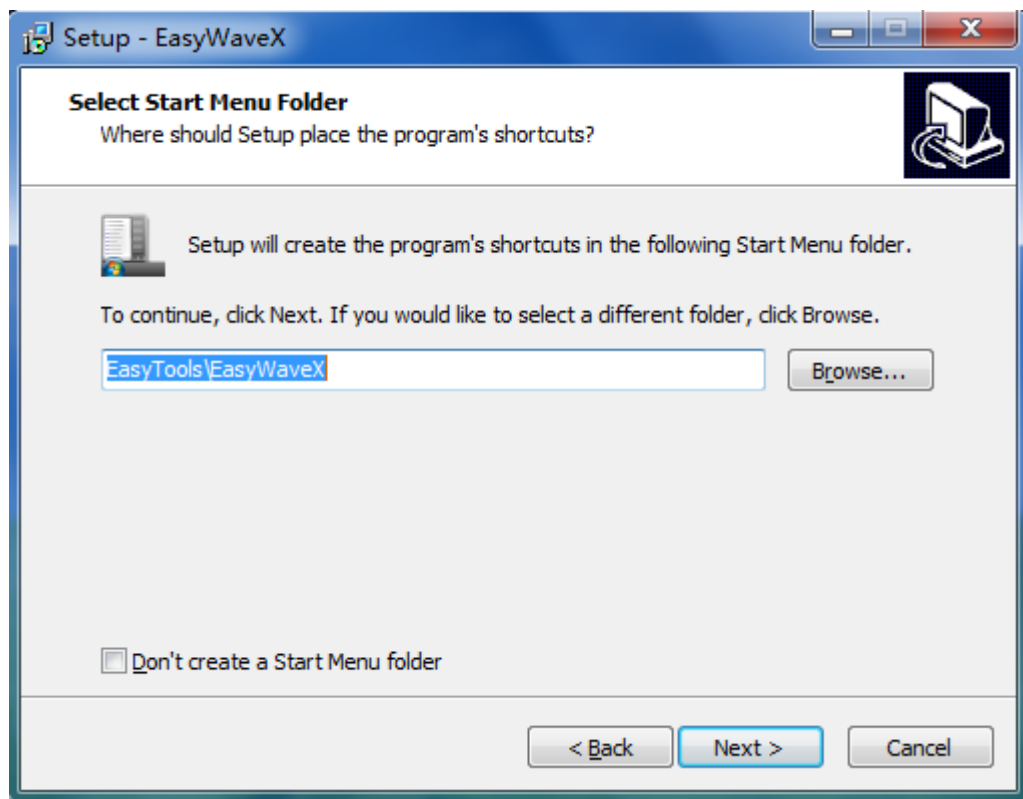
“I accept the agreement”, dialog as shown below:



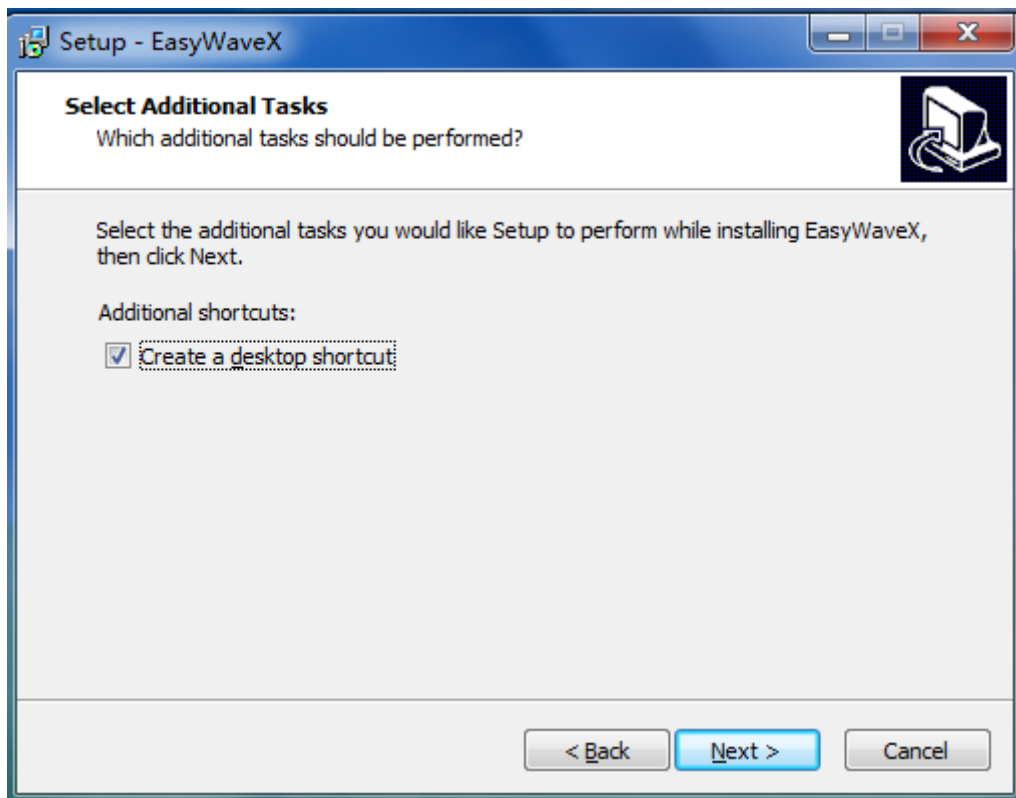
- b. Click Next, dialog as shown below:



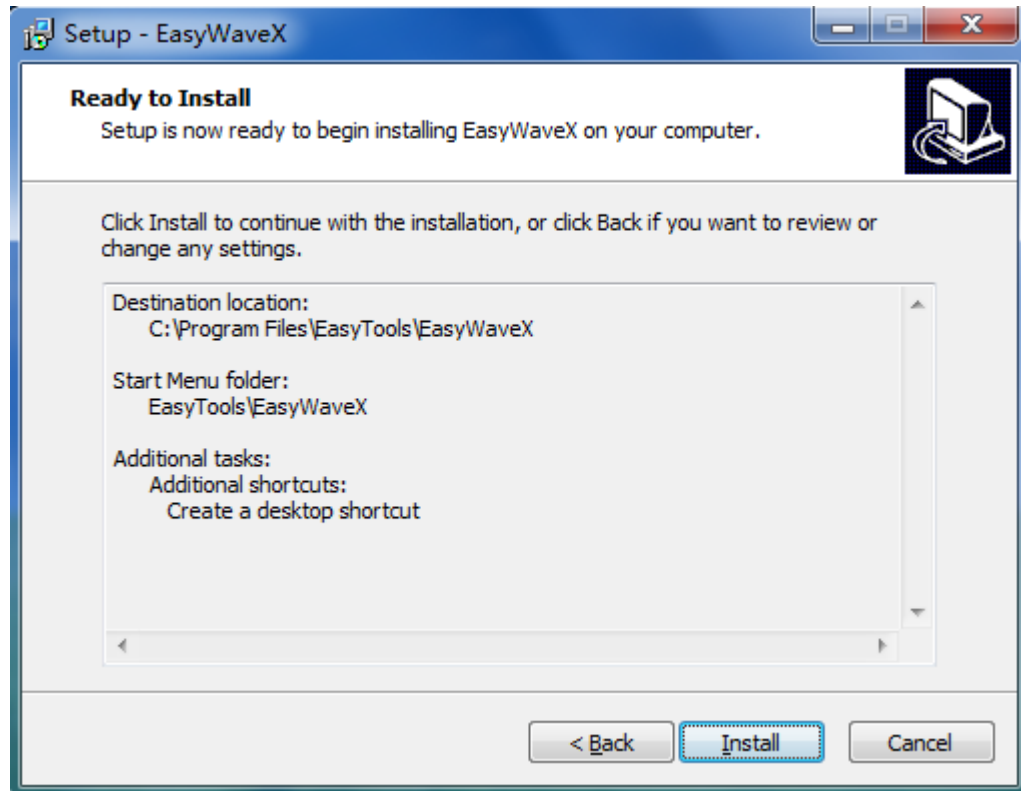
- c. Set the install path, default path is “C:\Program Files\EasyTools\EasyWaveX\”, you can change it, click Next, dialog as shown below:



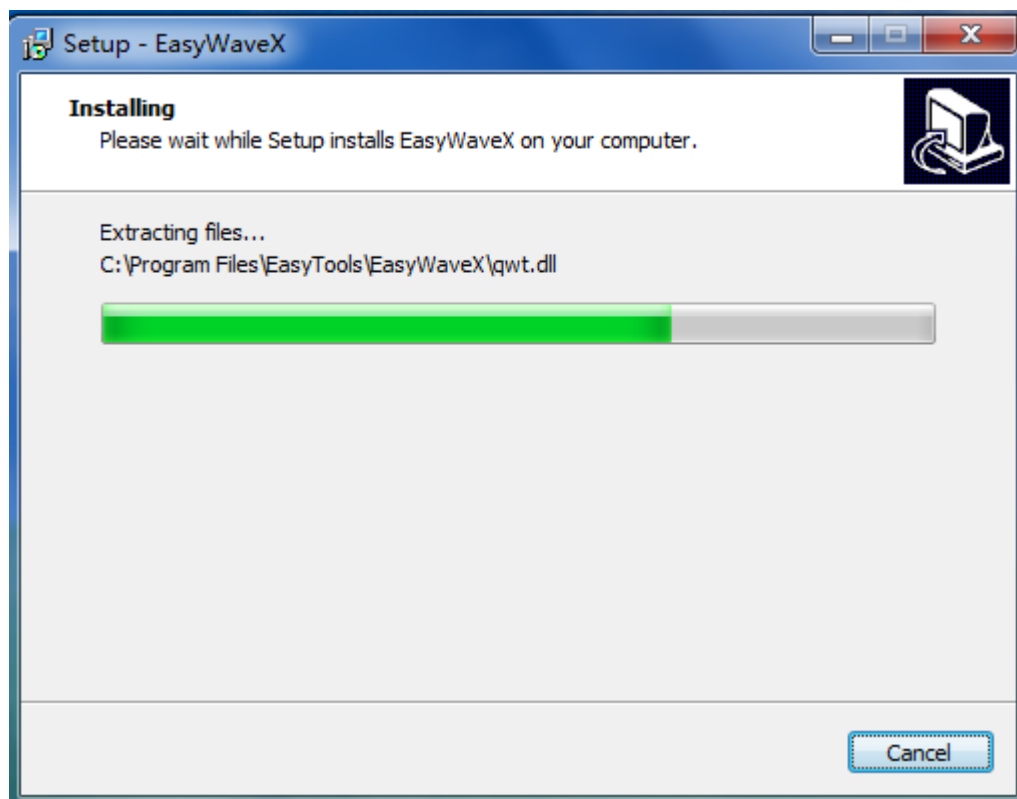
d. Click Next



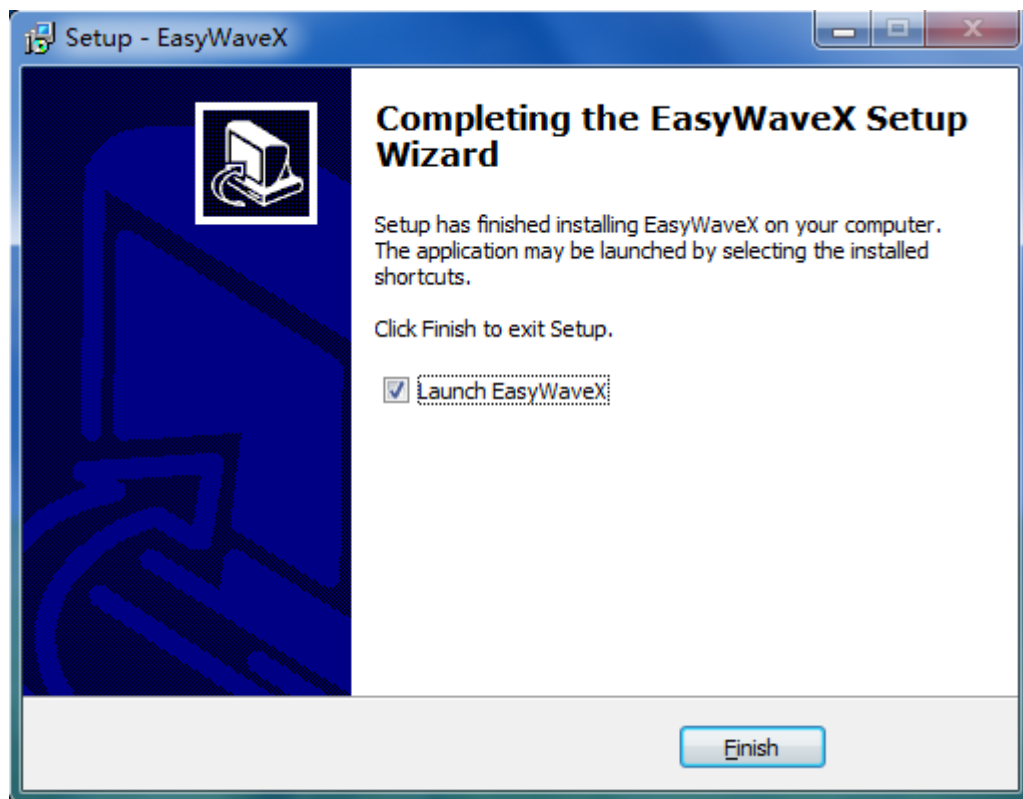
- e. Create a desktop shortcut, then Click next



- f. Click install to start the installation



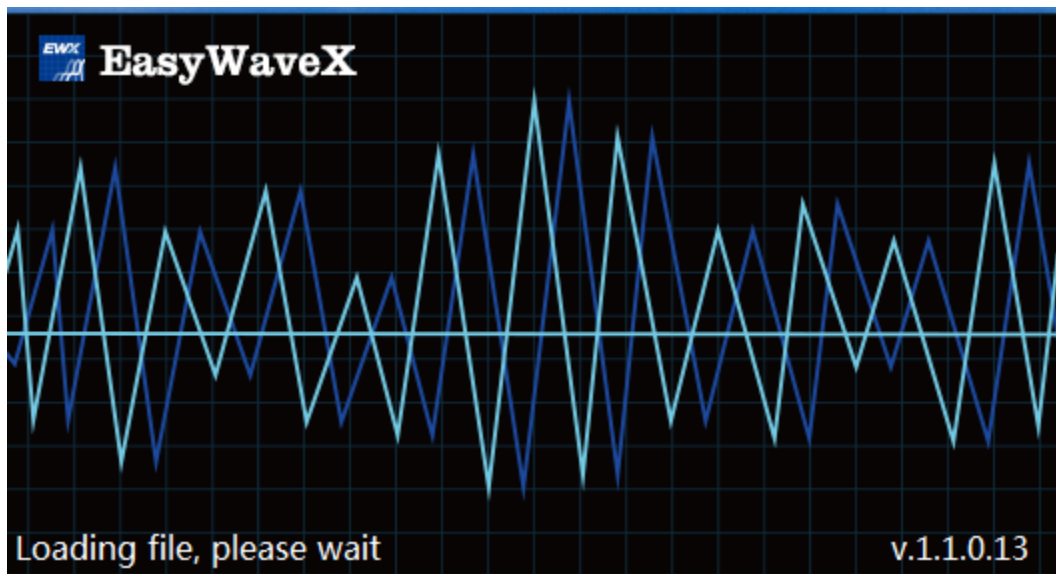




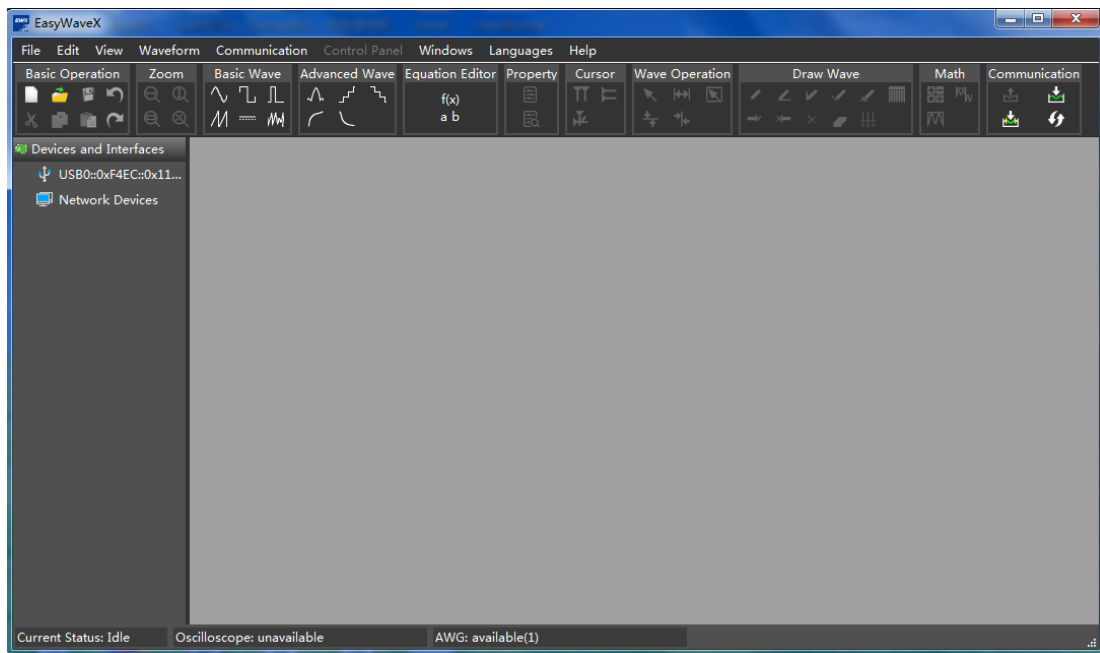
- g. Wait for the installation to complete and then Click “Finish” to exit.

## 2.1 Running the EasyWaveX

- a. Double click the EasyWaveX shortcut, it will should below picture.



- b. Wait for loading file and then proceed to the next step.
- c. Launch EasyWaveX, the application as shown below.



### 3 How to use?

Please reference the User help. The path is: Help--User Help

# End