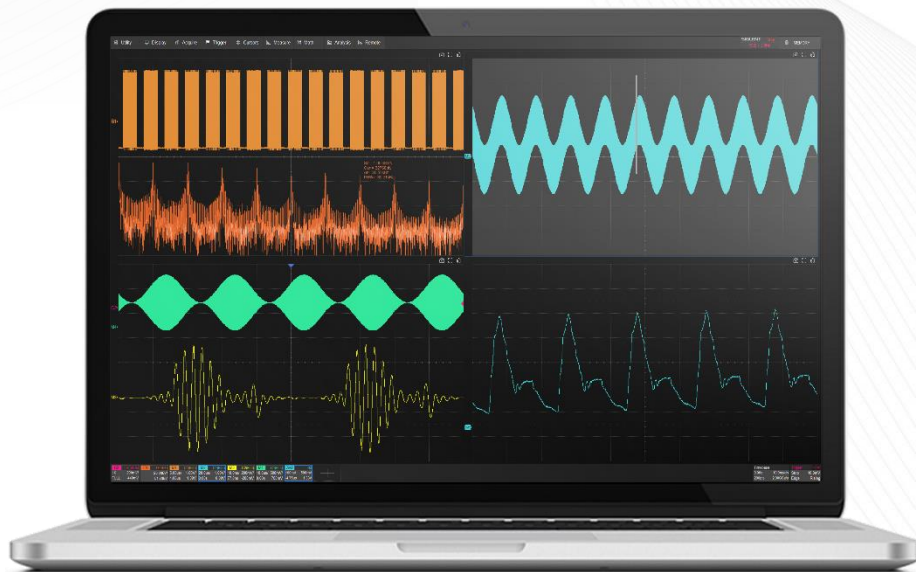


SigScopeLab

Oscilloscope on PC

Datasheet

EN01A



SigScopeLab

Product Overview

SigScopeLab is a professional time-domain signal analysis and oscilloscope control software running on the Windows operating system.

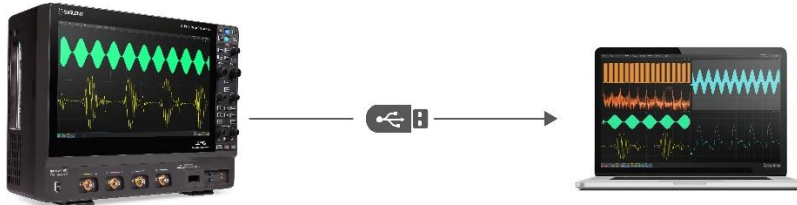
- Consistent operating experience. The same user interface as the newest SDS series oscilloscopes provides efficiency and ease of use.
- Comprehensive local analysis function. Supports offline analysis of original waveform files for all SDS models, including handheld oscilloscopes.

Features and Advantages

- Offline waveform data analysis on PC
 - Maximum 2 channels for offline waveform data analysis.
 - Offline waveform data volume up to 2Mpts per channel.
 - Support waveform data with 12 bit vertical resolution.
- Control remote SDS acquisition, and fetch waveform data to PC online for local analysis.
- Familiar SDS platform enables measurement functions from the oscilloscope on the PC as post data analysis. Typical use cases include:
 - Dozens of automatic measurement functions. Support measurement statistics, Gating measurements, and Math measurements. Support histogram and trend chart statistics for measurement parameters.
 - 2 independent waveform operations. Support maximum 32Mpts FFT. Support digital filtering. More than 20 commonly used time-domain operations. Support custom expressions for complex nested operations
 - 2-way serial bus decoding. Support various protocols, including I2C, SPI, UART, CAN, LIN..
 - Multiple advanced data analysis and processing functions: Signalscan, Navigation, Mask test, etc
- Multi window display for more flexible observation
- Consistent operation interface with the SDS traditional operation interface, making it easy to get started.

Design Features

Waveform Data Offline Analysis



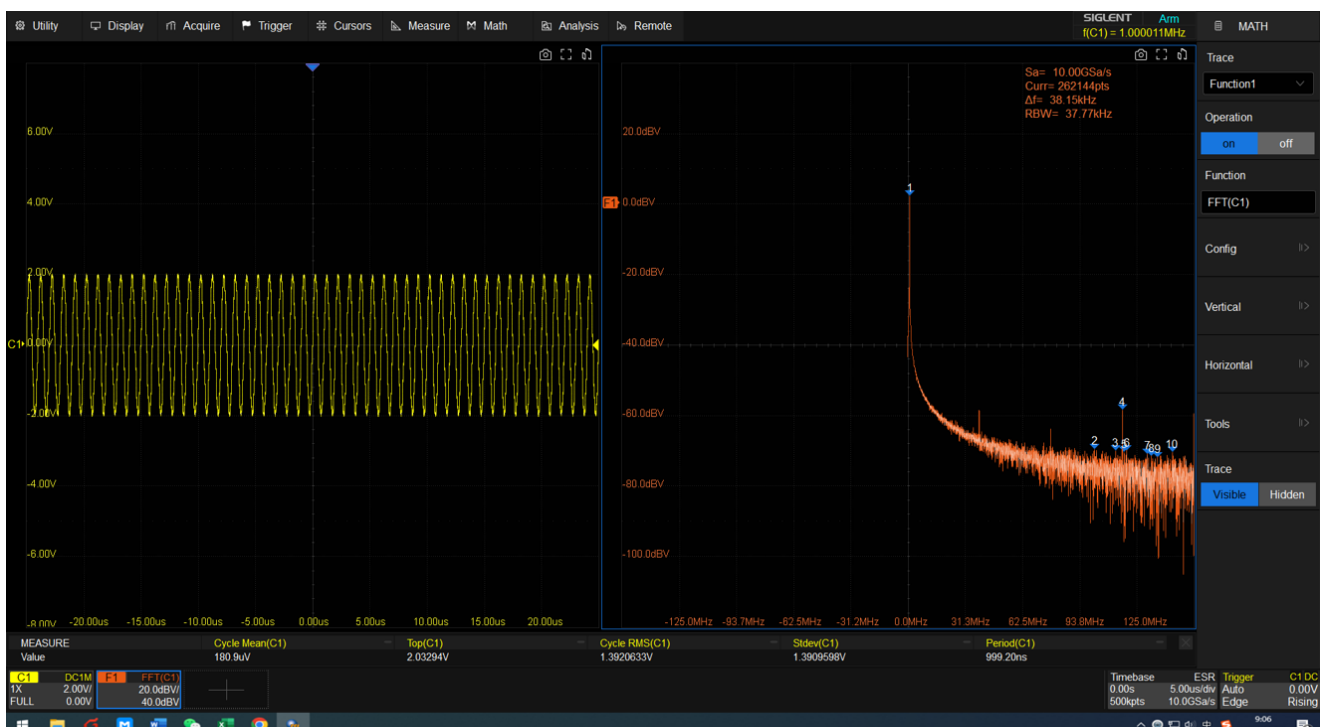
Export binary waveform files from the oscilloscope device and place them on the computer hard drive via a USB drive or network server, then use the Memory function of SigScopeLab to import waveform data, and finally perform waveform analysis. Support the analysis of up to 2Mpts of single offline waveform data.

Acquire Waveform Data to PC Online for Analysis



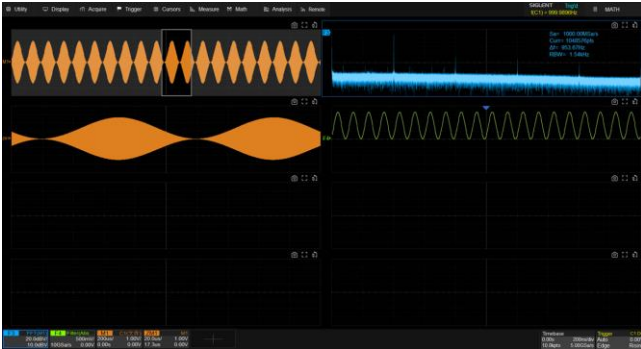
In this scenario, SigScopeLab only controls remote acquisition and does not control remote analysis and measurement. SigScopeLab fetches waveform data from the remote device online after controlling the acquisition, and then performs local data analysis without relying on the analysis function of the oscilloscope.

Same Platform as SDS Software

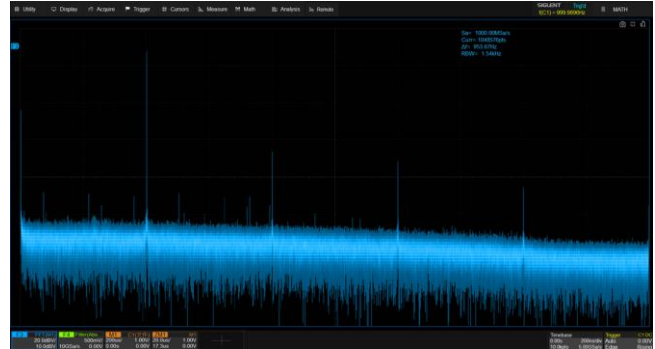


For the supported measurement and analysis functions, SigScopeLab and SDS devices have identical interaction and multi window display. Multi window mode provided, where users can measure and observe waveforms and analysis in different windows according to their needs, making it more flexible.

Multiple Window Display Modes



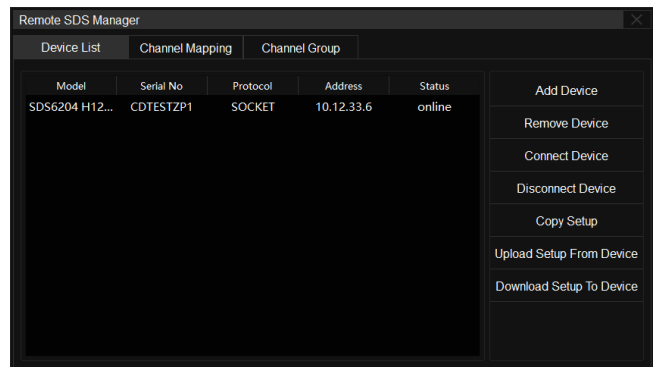
Seven window display modes to meet different observation needs.



In multi window mode, also possible to maximize or restore a certain display window.

Remote Management and Setup Synchronization Function

A remote device list is provided for convenient switching between oscilloscopes; It can be configured synchronously from the SDS device to SigScopeLab or from SigScopeLab to the SDS device, meeting different application scenarios.



Parameters and Specifications

Key Parameters

	Free Version
Number of Memory functions	2
Data points of Memory function	2Mpts per channel
Number of Math functions	2
Number of Measurements	5
Maximum Mem Depth for Online Control	2Mpts per channel

Analysis Function Features

Features	
Decode	Decoder module
Measurement	Measurement function module
Display	Configure persistence,color grade, intensity, etc
Horizontal	Horizontal parameter settings
Vertical	Vertical parameter settings
Math	Mathematical operation function
SignalScan	Search and locate waveform events
Navigate	Play control for timebase and SignalScan
Pass/Fail	Mask test function
Cursors	Cursor measurement analysis
Gate	Analysis gating setting
Save/Recall	Save and restore product configurations, binary waveforms, etc
Help	Help document

Online Acquisition, Configurable SDS Parameters

Mainly related to waveform acquisition parameters

Configurable Parameters	
Channel	Channel related parameters
Trigger	Trigger related parameters
Acquire	Acquisition related parameters

Horizontal	Horizontal related parameters
------------	-------------------------------

Remote SDS Device Management

Management Features
Add or remove SDS devices
List of SDS devices
Upload setup from SDS device to SigScopeLab
Download setup from SigScopeLab to SDS device

Models List for Remote SDS Device Management

SDS7000A	SDS5000X
SDS6000A	SDS2000X Plus
SDS6000L	
SDS3000X HD	
SDS2000X HD	
SDS1000X HD	
SDS800X HD	

PC Requirements

Unless otherwise specified, all specifications must meet the following conditions:

Minimum Requirements	
Operating System	Windows 10 or later 64-bit operating system
Processor	Intel® Core™ i5 Processor or better
Memory	8 GB RAM or better
Hard Disk	600MB or more available free space
Display Resolution	Minimum 1280x720, recommended 1920x1080
Virtual Memory	1GB or more of available virtual memory



About SIGLENT

SIGLENT is an international high-tech company, concentrating on R&D, sales, production and services of electronic test & measurement instruments.

SIGLENT first began developing digital oscilloscopes independently in 2002. After more than a decade of continuous development, SIGLENT has extended its product line to include digital oscilloscopes, isolated handheld oscilloscopes, function/arbitrary waveform generators, RF/MW signal generators, spectrum analyzers, vector network analyzers, digital multimeters, DC power supplies, electronic loads and other general purpose test instrumentation. Since its first oscilloscope was launched in 2005, SIGLENT has become the fastest growing manufacturer of digital oscilloscopes. We firmly believe that today SIGLENT is the best value in electronic test & measurement.

Headquarters:

SIGLENT Technologies Co., Ltd
Add: Bldg No.4 & No.5, Antongda Industrial
Zone, 3rd Liuxian Road, Bao'an District,
Shenzhen, 518101, China
Tel: + 86 755 3688 7876
Fax: + 86 755 3359 1582
Email: sales@siglent.com
Website: int.siglent.com

North America:

SIGLENT Technologies America, Inc
6557 Cochran Rd Solon, Ohio 44139
Tel: 440-398-5800
Toll Free: 877-515-5551
Fax: 440-399-1211
Email: info@siglentna.com
Website: www.siglentna.com

Europe:

SIGLENT Technologies Germany GmbH
Add: Staetzlinger Str. 70
86165 Augsburg, Germany
Tel: +49(0)-821-666 0 111 0
Fax: +49(0)-821-666 0 111 22
Email: info-eu@siglent.com
Website: www.siglenteu.com

Follow us on
Facebook: SiglentTech

