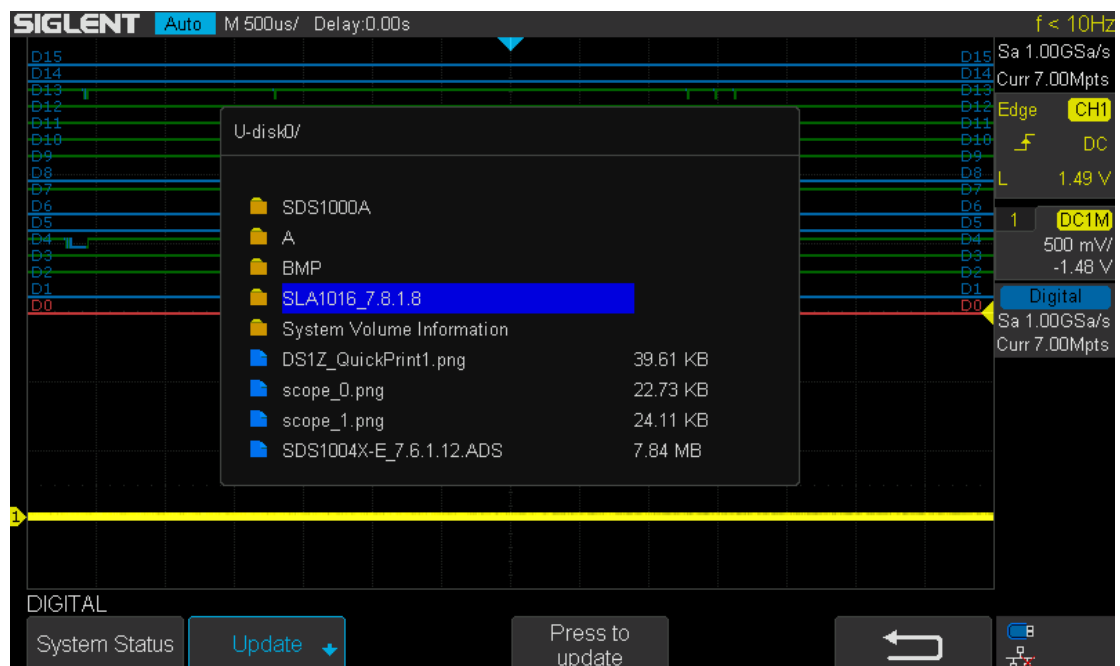


## SLA1016 Firmware Update Instructions

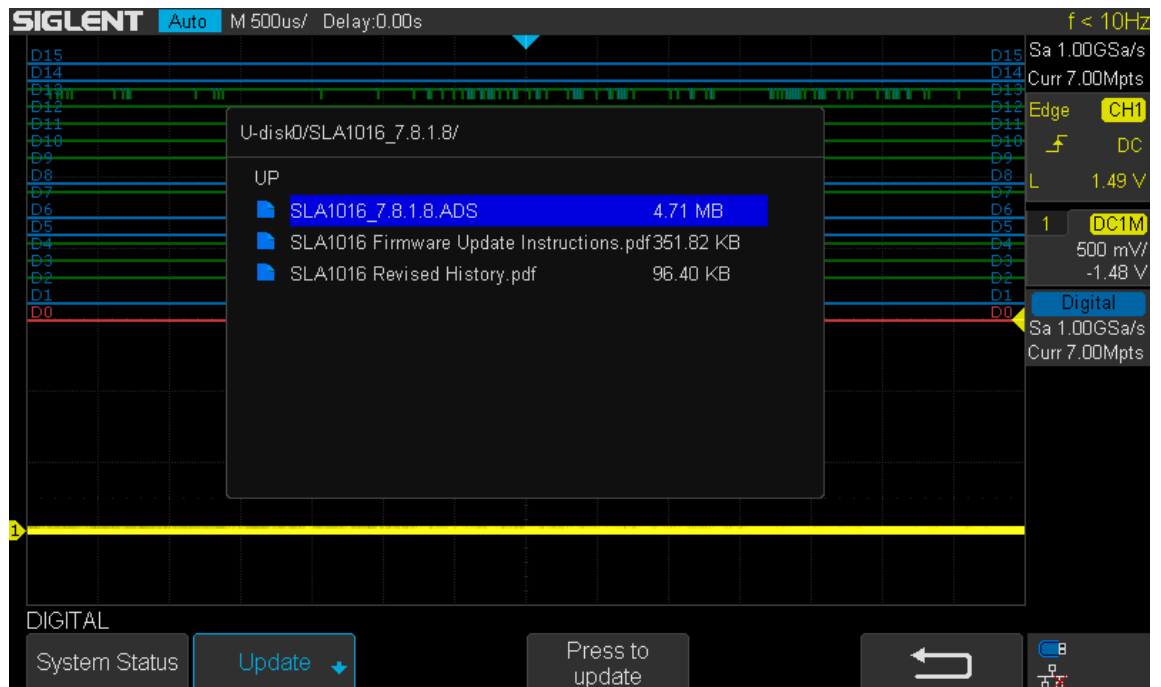
**Note: During the updating, do not cut off the power or pull out the U-disk.**

1. Unzip the .zip file and copy the .ADS file to a flash drive.
2. Connect the SLA1016 to the oscilloscope , wait for the initializing until the digital device is detected.
3. Insert the flash drive into the USB interface on the front panel of the oscilloscope.
4. Press the “Digital” button on the front panel to enter the Digital menu.
5. Press the “Next Page” softkey to go to the second page of the Digital menu.
6. Press the “System” softkey to enter the UPDATE page.
7. Press the “Update” softkey and a window will open to show you the files on the flash drive. Turn the “Universal Knob” to select the “SLA1016\_7.8.1.8” file.

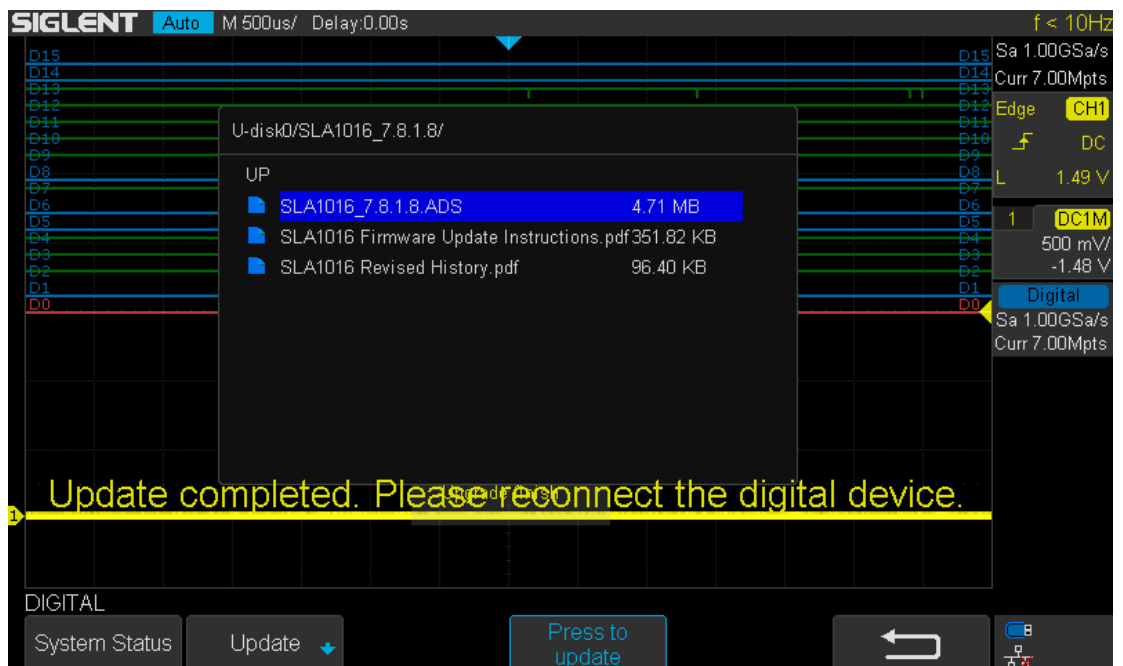


8. Press the knob to enter the following page .Turn the “Universal Knob” to select the ADS file to perform the update.

9. When the ADS file to perform the update is highlighted press the “Press to Update” softkey.



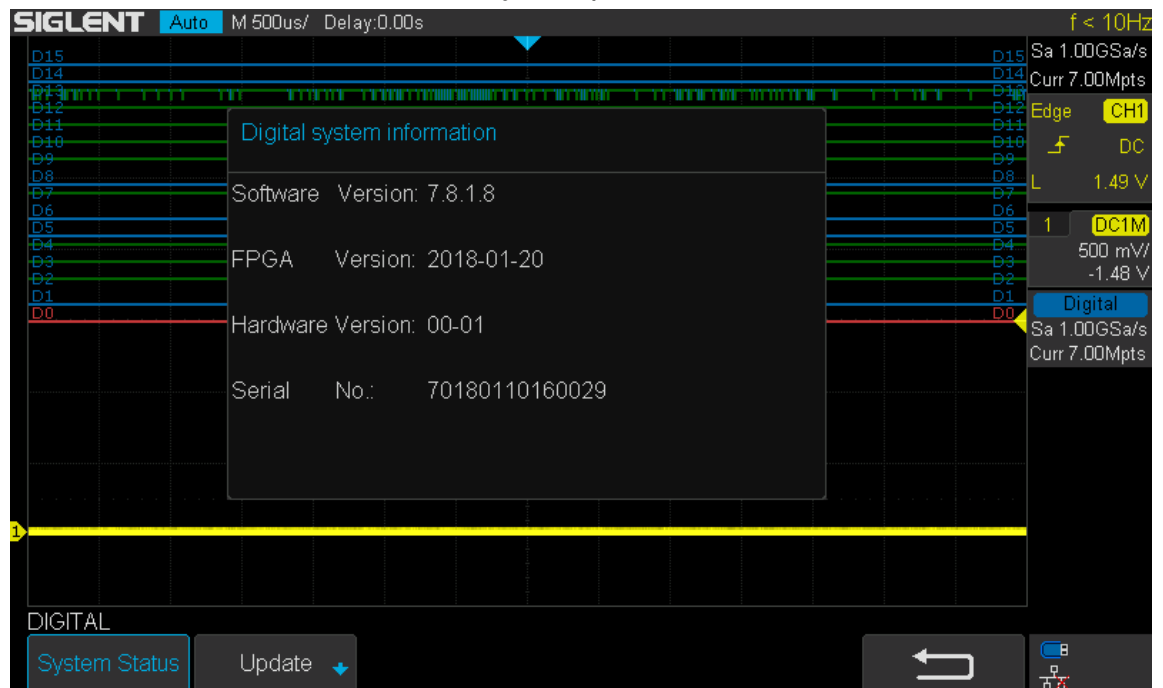
10. A window will open showing the system updating. When finished it will display, “Update completed. Please reconnect the digital device.”



11. Reconnect the SLA1016.
12. Press the “Digital” button on the front panel to enter the Digital menu page.
13. Press the “Next Page” softkey to go to the second page of the

Digital menu page.

14. Press the “System” –“System Status” to confirm the version number under “Software Version” matches your update version or not.



**Note:** During the updating, do not cut off the power or pull out the U-disk.