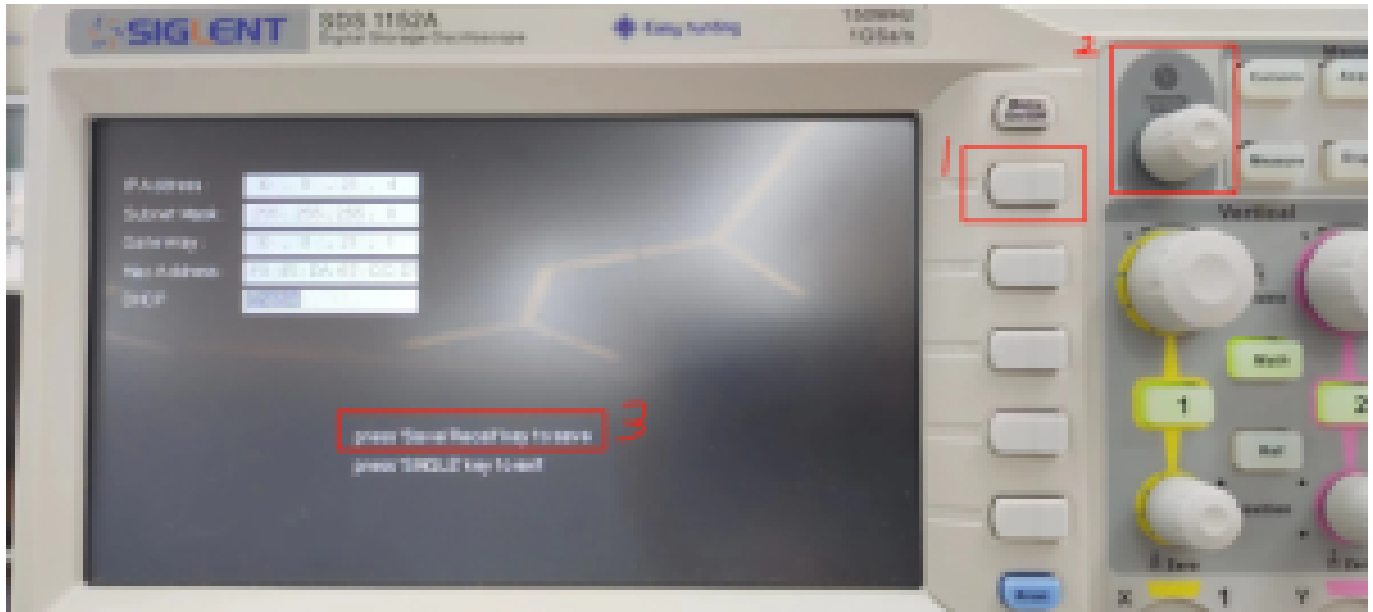


LAN setup on a SDS1000 Series

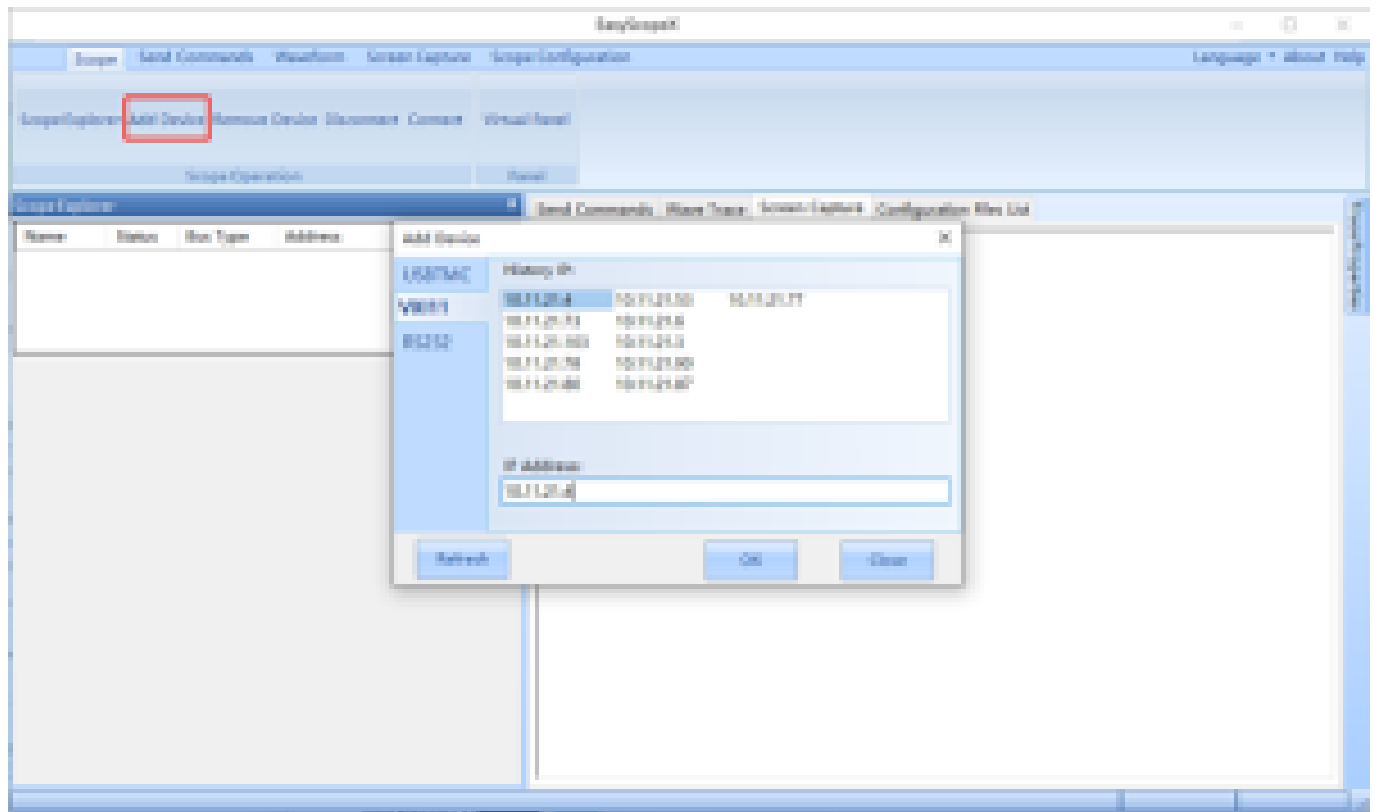
September 01, 2023

This operating tip shows how to setup the LAN configuration on the SDS1000 scopes like the A, DL+, or CML+ series.

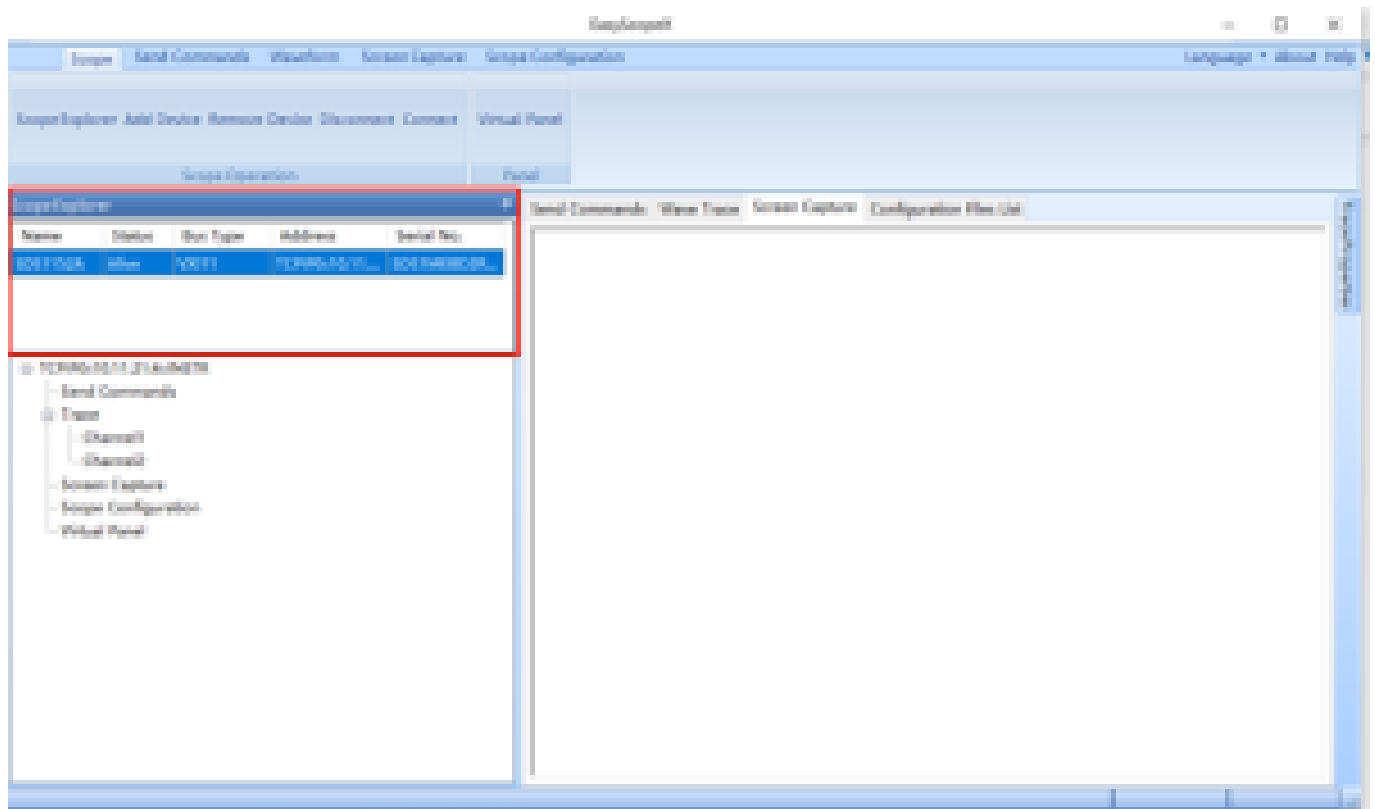


Firstly, press the button(1) and rotate the knob(2), which will select using DHCP or not. And press Save/Recall button to save the IP settings. (I am using DHCP and the IP address is 10.11.21.4)

(You can also manually set these IP information by using button1 and knob2 in the picture. Just make sure you also set the IP correctly on your computer.)



Secondly, open the EasyScopeX, select Add Device and type the IP address in VXI11, click OK.



Finally, you will see the scope information in Scope Explorer. It will show that the status is alive, which means you are successfully controlling the instrument right now.



North American Headquarters

SIGLENT Technologies NA
6557 Cochran Rd Solon, Ohio 44139
Tel: 440-398-5800
Toll Free: 877-515-5551
Fax: 440-399-1211
info@siglent.com
www.siglentamerica.com/

European Sales Offices

SIGLENT TECHNOLOGIES GERMANY GmbH
Staetzlinger Str. 70
86165 Augsburg, Germany
Tel: +49(0)-821-666 0 111 0
Fax: +49(0)-821-666 0 111 22
info-eu@siglent.com
www.siglenteu.com

Asian Headquarters

SIGLENT TECHNOLOGIES CO., LTD.
Blog No.4 & No.5, Antongda Industrial Zone,
3rd Liuxian Road, Bao'an District,
Shenzhen, 518101, China.
Tel: + 86 755 3661 5186
Fax: + 86 755 3359 1582
sales@siglent.com
www.siglent.com/ens