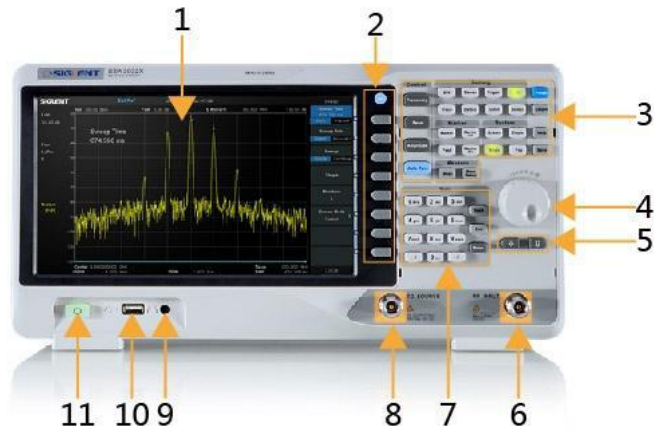


## SSA3000X Plus Firmware Revision History

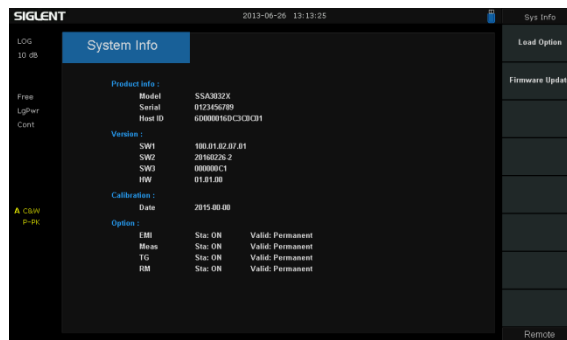
Version	Revision
V2.2.1.2.8 2020/06/30	<p>New Functionality:</p> <ul style="list-style-type: none"> <li>• Update EMI option to a new EMI measurement mode</li> </ul> <p>Improvements:</p> <ul style="list-style-type: none"> <li>• Improve TG output harmonic performance</li> <li>• Update Help file</li> </ul> <p>Solved Issues:</p> <ul style="list-style-type: none"> <li>• Fix ADC overload warning</li> <li>• Fix Ch Power calculation bug in small span</li> </ul>
V2.2.1.2.7 2020/05/12	<p>Improvements:</p> <ul style="list-style-type: none"> <li>• Add Limit mask offset in SA mode</li> <li>• TG Level adjustable in Reflection Meas</li> </ul> <p>Solved Issues:</p> <ul style="list-style-type: none"> <li>• Fixed AM and FM symbol rate error, Lpf coefficient error, in AMA mode</li> <li>• Fixed Filter bandwidth error in DMA mode</li> <li>• Fixed Freq counter error in SA mode</li> <li>• Fixed Harmonic error in SA mode</li> <li>• Help Display error</li> </ul>
V2.2.1.2.5 2019/11/11	<p>Improvements:</p> <ul style="list-style-type: none"> <li>• Optimize trace, marker, signal track, TG normalization , Reflection measurement in SA Mode</li> <li>• Optimize web server UI</li> </ul> <p>Solved Issues:</p> <ul style="list-style-type: none"> <li>• Fixed video trigger fail, errors in Harmonic measurement in SA Mode</li> <li>• Fixed spectrum amplitude error, meas error, waveform discontinue in MA Mode</li> <li>• Fixed English help, system message</li> </ul>

## Update Instructions

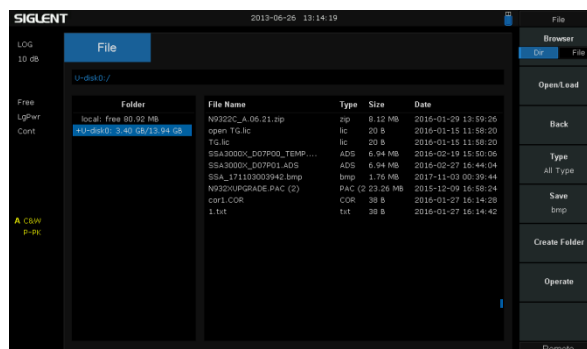
- Copy the update file (\*.ads) to a FLASH type U-disk, and then connect the U-disk to the USB host port(10) of the instrument.

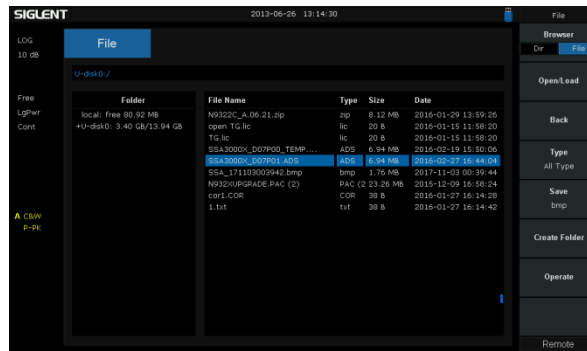


- Press the **System** key on the front panel, and then softkey “System->System Info-> Firmware Update”, to enter the interface of the file browser.

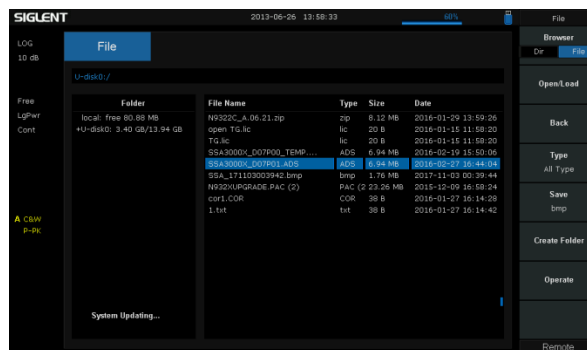


- Select “ U-disk” thru the knob on the front panel, press “Browser”, and then select the correct **ADS file** using the knob





- Press "Open/Load" to start the update. A progress bar is displayed during the update. When updating complete, the spectrum analyzer will restart automatically.



**WARNING:**

**DO NOT shut down the instrument during updating**