

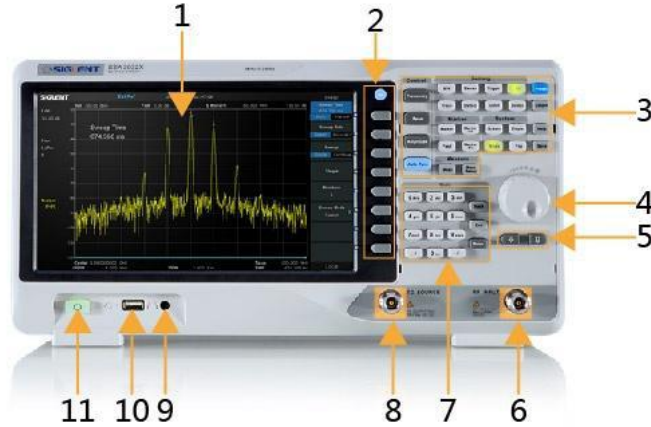
SSA3000X Plus Firmware Revision History

Version	Revision
V3.2.2.3.2 2020/09/09	<p>Solved Issues:</p> <ul style="list-style-type: none"> • Fix avg power bug in EMI Mode • Fix amplitude bug in AMA Mode • Fix peak search bug in SCPI command
V2.2.1.2.8 2020/06/30	<p>New Functionality:</p> <ul style="list-style-type: none"> • Update EMI option to a new EMI measurement mode <p>Improvements:</p> <ul style="list-style-type: none"> • Improve TG output harmonic performance • Update Help file <p>Solved Issues:</p> <ul style="list-style-type: none"> • Fix ADC overload warning • Fix Ch Power calculation bug in small span
V2.2.1.2.7 2020/05/12	<p>Improvements:</p> <ul style="list-style-type: none"> • Add Limit mask offset in SA mode • TG Level adjustable in Reflection Meas <p>Solved Issues:</p> <ul style="list-style-type: none"> • Fixed AM and FM symbol rate error, Lpf coefficient error, in AMA mode • Fixed Filter bandwidth error in DMA mode • Fixed Freq counter error in SA mode • Fixed Harmonic error in SA mode • Help Display error
V2.2.1.2.5 2019/11/11	<p>Improvements:</p> <ul style="list-style-type: none"> • Optimize trace, marker, signal track, TG normalization , Reflection measurement in SA Mode • Optimize web server UI <p>Solved Issues:</p> <ul style="list-style-type: none"> • Fixed video trigger fail, errors in Harmonic measurement in SA Mode • Fixed spectrum amplitude error, meas error, waveform discontinue in MA Mode • Fixed English help, system message

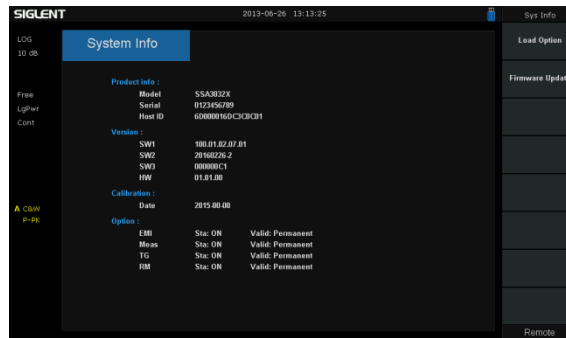
Version	Revision

Update Instructions

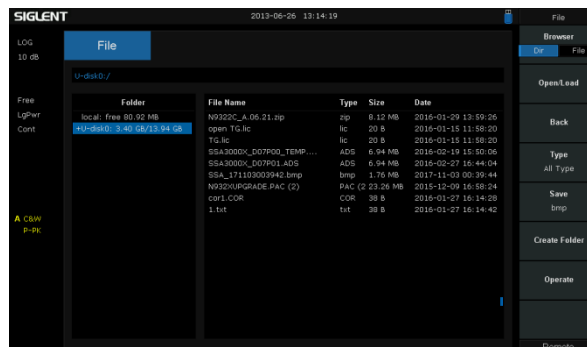
- Copy the update file (*.ads) to a FLASH type U-disk, and then connect the U-disk to the USB host port(10) of the instrument.

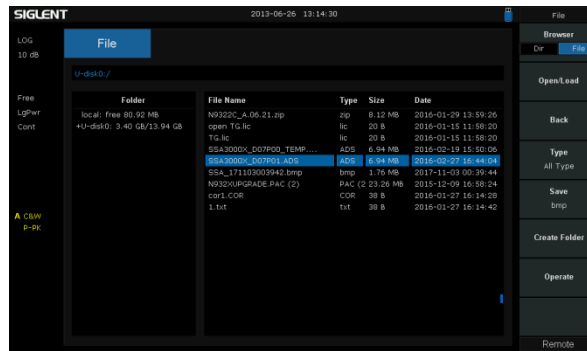


- Press the **System** key on the front panel, and then softkey “System->System Info-> Firmware Update”, to enter the interface of the file browser.

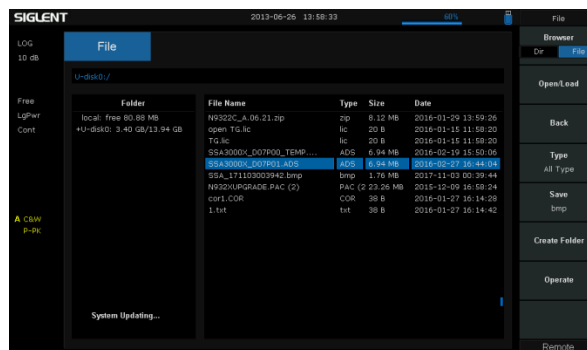


- Select “ U-disk” thru the knob on the front panel, press “Browser”, and then select the correct **ADS file** using the knob





4. Press “Open/Load” to start the update. A progress bar is displayed during the update. When updating complete, the spectrum analyzer will restart automatically.



WARNING:

DO NOT shut down the instrument during updating